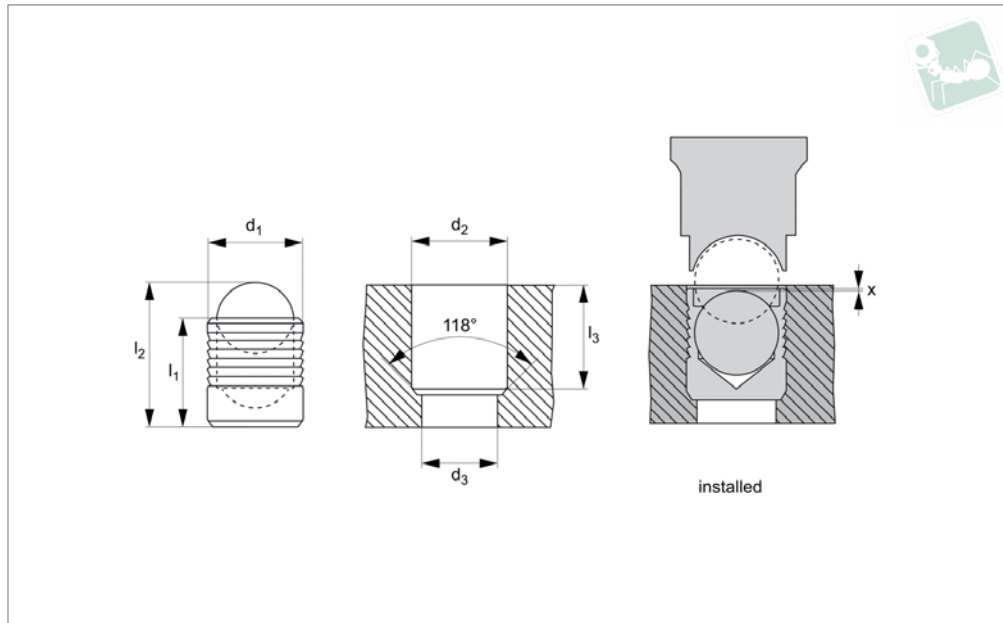
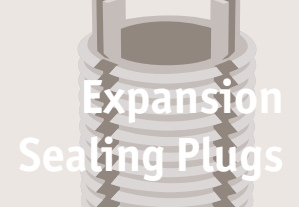




Expansion Sealing Plugs - Inch

Inch - short



SE0505

EXPANSION SEALING PLUGS

Material

Plug body: case hardened steel (zinc-plated), stainless steel (A2, AISI 303 & A4 AISI 316) or aluminium (2024-T4).

Ball: heat-treated bearing steel or stainless steel (A2, AISI 303 & A4 AISI 316).

Technical Notes

These high pressure sealing plugs are used to blank off externally drilled holes for air

and gas.

No need for tapping, reaming, machining of O-ring grooves or the use of tapes or sealants.

Ensure the ball is fully seated before applying pressure.

Dimensions in inches.

Tips

Working pressure up to 450 bar (dependent

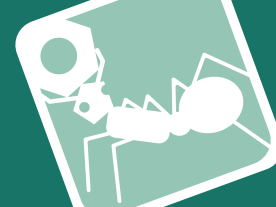
on body material and material into which installed).

Please consult technical pages for installation instructions and performance data.

Important Notes

Please refer to technical pages for product installation details.

| Order No. | d ₁ | l ₁ | l ₂ | d ₂ +0.004 -0.000 | d ₃ max. | l ₃ min. | x +0.01 -0.010 | Body | Ball |
|-----------------|----------------|----------------|----------------|---------------------------------|------------------------|------------------------|-------------------|----------|--------|
| SE0505.01-093-C | 0.0937 | 0.098 | 0.12 | 0.0937 | 0.070 | 0.081 | 0.010 | Steel ZP | Steel |
| SE0505.01-125-C | 0.1250 | 0.125 | 0.16 | 0.1250 | 0.100 | 0.113 | 0.010 | Steel ZP | Steel |
| SE0505.01-156-C | 0.1562 | 0.125 | 0.17 | 0.1562 | 0.130 | 0.113 | 0.010 | Steel ZP | Steel |
| SE0505.01-187-C | 0.1875 | 0.187 | 0.24 | 0.1875 | 0.160 | 0.170 | 0.010 | Steel ZP | Steel |
| SE0505.01-218-C | 0.2187 | 0.187 | 0.25 | 0.2187 | 0.190 | 0.170 | 0.010 | Steel ZP | Steel |
| SE0505.01-250-C | 0.2500 | 0.225 | 0.30 | 0.2500 | 0.220 | 0.196 | 0.010 | Steel ZP | Steel |
| SE0505.01-281-C | 0.2812 | 0.225 | 0.35 | 0.2812 | 0.250 | 0.233 | 0.010 | Steel ZP | Steel |
| SE0505.01-312-C | 0.3125 | 0.280 | 0.39 | 0.3125 | 0.281 | 0.255 | 0.010 | Steel ZP | Steel |
| SE0505.01-343-C | 0.3437 | 0.307 | 0.43 | 0.3437 | 0.312 | 0.275 | 0.010 | Steel ZP | Steel |
| SE0505.01-406-C | 0.4062 | 0.365 | 0.52 | 0.4062 | 0.375 | 0.308 | 0.010 | Steel ZP | Steel |
| SE0505.02-093-S | 0.0937 | 0.098 | 0.12 | 0.0937 | 0.070 | 0.081 | 0.010 | A2 s/s | Steel |
| SE0505.02-125-S | 0.1250 | 0.125 | 0.16 | 0.1250 | 0.100 | 0.113 | 0.010 | A2 s/s | Steel |
| SE0505.02-156-S | 0.1562 | 0.125 | 0.17 | 0.1562 | 0.130 | 0.113 | 0.010 | A2 s/s | Steel |
| SE0505.02-187-S | 0.1875 | 0.187 | 0.24 | 0.1875 | 0.160 | 0.170 | 0.010 | A2 s/s | Steel |
| SE0505.02-218-S | 0.2187 | 0.187 | 0.25 | 0.2187 | 0.190 | 0.170 | 0.010 | A2 s/s | Steel |
| SE0505.02-250-S | 0.2500 | 0.225 | 0.30 | 0.2500 | 0.220 | 0.196 | 0.010 | A2 s/s | Steel |
| SE0505.02-281-S | 0.2812 | 0.225 | 0.35 | 0.2812 | 0.250 | 0.233 | 0.010 | A2 s/s | Steel |
| SE0505.02-312-S | 0.3125 | 0.280 | 0.39 | 0.3125 | 0.281 | 0.255 | 0.010 | A2 s/s | Steel |
| SE0505.02-343-S | 0.3437 | 0.307 | 0.43 | 0.3437 | 0.312 | 0.275 | 0.010 | A2 s/s | Steel |
| SE0505.02-406-S | 0.4062 | 0.365 | 0.52 | 0.4062 | 0.375 | 0.308 | 0.010 | A2 s/s | Steel |
| SE0505.03-093-S | 0.0937 | 0.098 | 0.12 | 0.0937 | 0.070 | 0.081 | 0.010 | A2 s/s | A2 s/s |
| SE0505.03-125-S | 0.1250 | 0.125 | 0.16 | 0.1250 | 0.100 | 0.113 | 0.010 | A2 s/s | A2 s/s |
| SE0505.03-156-S | 0.1562 | 0.125 | 0.17 | 0.1562 | 0.130 | 0.113 | 0.010 | A2 s/s | A2 s/s |
| SE0505.03-187-S | 0.1875 | 0.187 | 0.24 | 0.1875 | 0.160 | 0.170 | 0.010 | A2 s/s | A2 s/s |
| SE0505.03-218-S | 0.2187 | 0.187 | 0.25 | 0.2187 | 0.190 | 0.170 | 0.010 | A2 s/s | A2 s/s |
| SE0505.03-250-S | 0.2500 | 0.225 | 0.30 | 0.2500 | 0.220 | 0.196 | 0.010 | A2 s/s | A2 s/s |
| SE0505.03-281-S | 0.2812 | 0.225 | 0.35 | 0.2812 | 0.250 | 0.233 | 0.010 | A2 s/s | A2 s/s |
| SE0505.03-312-S | 0.3125 | 0.280 | 0.39 | 0.3125 | 0.281 | 0.255 | 0.010 | A2 s/s | A2 s/s |



| Order No. | d ₁ | l ₁ | l ₂ | d ₂ +0.004 -0.000 | d ₃ max. | l ₃ min. | x +0.0 -0.010 | Body | Ball |
|-----------------|----------------|----------------|----------------|---------------------------------|------------------------|------------------------|------------------|-----------|--------|
| SE0505.03-343-S | 0.3437 | 0.307 | 0.43 | 0.3437 | 0.312 | 0.275 | 0.010 | A2 s/s | A2 s/s |
| SE0505.03-406-S | 0.4062 | 0.365 | 0.52 | 0.4062 | 0.375 | 0.308 | 0.010 | A2 s/s | A2 s/s |
| SE0505.04-125-T | 0.1250 | 0.125 | 0.16 | 0.1250 | 0.100 | 0.113 | 0.010 | A4 s/s | A4 s/s |
| SE0505.04-156-T | 0.1562 | 0.125 | 0.17 | 0.1562 | 0.130 | 0.113 | 0.010 | A4 s/s | A4 s/s |
| SE0505.04-187-T | 0.1875 | 0.187 | 0.24 | 0.1875 | 0.160 | 0.170 | 0.010 | A4 s/s | A4 s/s |
| SE0505.04-218-T | 0.2187 | 0.187 | 0.25 | 0.2187 | 0.190 | 0.170 | 0.010 | A4 s/s | A4 s/s |
| SE0505.04-250-T | 0.2500 | 0.225 | 0.30 | 0.2500 | 0.220 | 0.196 | 0.010 | A4 s/s | A4 s/s |
| SE0505.04-281-T | 0.2812 | 0.225 | 0.35 | 0.2812 | 0.250 | 0.233 | 0.010 | A4 s/s | A4 s/s |
| SE0505.04-312-T | 0.3125 | 0.280 | 0.39 | 0.3125 | 0.281 | 0.255 | 0.010 | A4 s/s | A4 s/s |
| SE0505.04-343-T | 0.3437 | 0.307 | 0.43 | 0.3437 | 0.312 | 0.275 | 0.010 | A4 s/s | A4 s/s |
| SE0505.04-406-T | 0.4062 | 0.365 | 0.52 | 0.4062 | 0.375 | 0.308 | 0.010 | A4 s/s | A4 s/s |
| SE0505.05-125-A | 0.1250 | 0.125 | 0.16 | 0.1250 | 0.100 | 0.113 | 0.010 | Aluminium | A2 s/s |
| SE0505.05-156-A | 0.1562 | 0.125 | 0.17 | 0.1562 | 0.130 | 0.113 | 0.010 | Aluminium | A2 s/s |
| SE0505.05-187-A | 0.1875 | 0.187 | 0.24 | 0.1875 | 0.160 | 0.170 | 0.010 | Aluminium | A2 s/s |
| SE0505.05-218-A | 0.2187 | 0.187 | 0.25 | 0.2187 | 0.190 | 0.170 | 0.010 | Aluminium | A2 s/s |
| SE0505.05-250-A | 0.2500 | 0.225 | 0.30 | 0.2500 | 0.220 | 0.196 | 0.010 | Aluminium | A2 s/s |
| SE0505.05-281-A | 0.2812 | 0.225 | 0.35 | 0.2812 | 0.250 | 0.233 | 0.010 | Aluminium | A2 s/s |
| SE0505.05-312-A | 0.3125 | 0.280 | 0.39 | 0.3125 | 0.281 | 0.255 | 0.010 | Aluminium | A2 s/s |
| SE0505.05-343-A | 0.3437 | 0.307 | 0.43 | 0.3437 | 0.312 | 0.275 | 0.010 | Aluminium | A2 s/s |
| SE0505.05-406-A | 0.4062 | 0.365 | 0.52 | 0.4062 | 0.375 | 0.308 | 0.010 | Aluminium | A2 s/s |