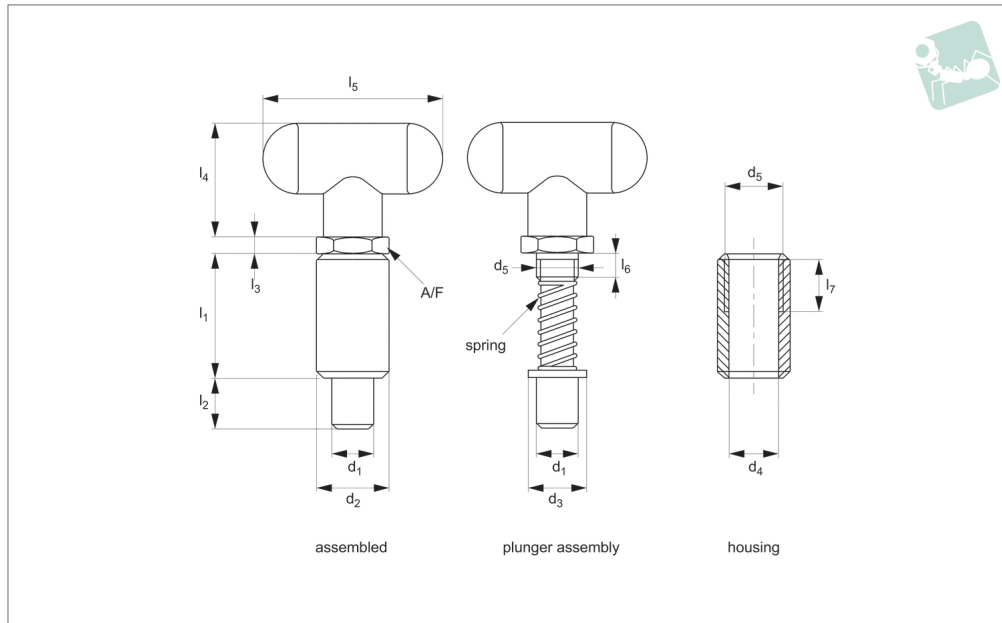




# Spring Loaded Pin - Inch - T-Handle non-locking

## Spring Loaded Pins



### SL2016

SPRING LOADED PINS

#### Material

##### Steel Type-

Housing: Steel C1038, not plated.

Plunger assembly: Steel C1038, zinc plated.

Handle: Thermoplastic, black.

##### Stainless Steel Type-

Housing: Stainless Steel AISI 303.

Plunger assembly: Stainless Steel AISI 303.

Handle: Thermoplastic, black.

##### Aluminium Type-

Housing: aluminium 6061-T6.

Plunger assembly: Steel C1038, zinc plated.

Handle: Thermoplastic, black.

#### Technical Notes

Force required to lift handle approx. 2,5Kg.

For both the steel and aluminium plungers, tensile strength is 620 N/mm<sup>2</sup> except for largest pin size being 400 N/mm<sup>2</sup>.

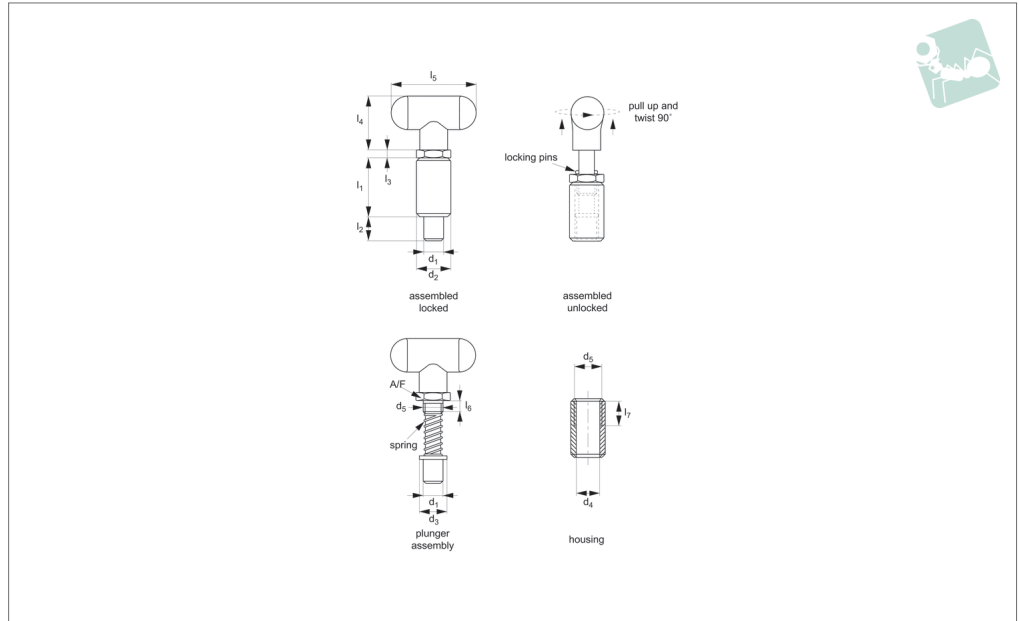
#### Tips

Housing and plunger assembly supplied as separate elements, this allows housing to be welded in place without damage to plastic handle of plunger assembly. Spring loaded pin is non-locking, pin simply springs back when lever released.

Order No.	Material	d <sub>1</sub>	d <sub>2</sub>	l <sub>1</sub>	l <sub>2</sub>	l <sub>3</sub>	l <sub>4</sub>	l <sub>5</sub>	l <sub>6</sub>	l <sub>7</sub>	d <sub>3</sub>	d <sub>4</sub>	d <sub>5</sub>	A/F
		+0.05 -0.1	+0.00 -0.12											
SL2016.I25-150-C	Steel	6,35 (1/4")	25.40	38.1	14.3	4.75	36.5	57.1	11.2	21.9	16.15	16.5	3/4"-10	22.3
SL2016.I37-150-C	Steel	9,53 (3/8")	25.40	38.1	14.3	4.75	36.5	57.1	11.2	21.9	16.15	16.5	3/4"-10	22.3
SL2016.I50-150-C	Steel	12,70 (1/2")	25.40	38.1	14.3	4.75	36.5	57.1	11.2	21.9	16.15	16.5	3/4"-10	22.3
SL2016.I50-225-C	Steel	12,70 (1/2")	25.40	57.1	14.3	4.75	36.5	57.1	11.2	21.9	16.15	16.5	3/4"-10	22.3
SL2016.I62-225-C	Steel	15,87 (5/8")	25.40	57.1	14.3	4.75	36.5	57.1	11.2	21.9	16.15	16.5	3/4"-10	22.3
SL2016.I25-150-A	Aluminium	6,35 (1/4")	25.40	38.1	14.3	4.75	36.5	57.1	11.2	21.9	16.15	16.5	3/4"-10	22.3
SL2016.I37-150-A	Aluminium	9,53 (3/8")	25.40	38.1	14.3	4.75	36.5	57.1	11.2	21.9	16.15	16.5	3/4"-10	22.3
SL2016.I50-150-A	Aluminium	12,70 (1/2")	25.40	38.1	14.3	4.75	36.5	57.1	11.2	21.9	16.15	16.5	3/4"-10	22.3
SL2016.I50-225-A	Aluminium	12,70 (1/2")	25.40	57.1	14.3	4.75	36.5	57.1	11.2	21.9	16.15	16.5	3/4"-10	22.3
SL2016.I62-225-A	Aluminium	15,87 (5/8")	25.40	57.1	14.3	4.75	36.5	57.1	11.2	21.9	16.15	16.5	3/4"-10	22.3
SL2016.I37-150-S	Stainless	9,53 (3/8")	25.40	38.1	14.3	4.75	36.5	57.1	11.2	21.9	16.15	16.5	3/4"-10	22.3
SL2016.I50-150-S	Stainless	12,70 (1/2")	25.40	38.1	14.3	4.75	36.5	57.1	11.2	21.9	16.15	16.5	3/4"-10	22.3
SL2016.I50-225-S	Stainless	12,70 (1/2")	25.40	57.1	14.3	4.75	36.5	57.1	11.2	21.9	16.15	16.5	3/4"-10	22.3



## SL2018



### Material

#### Steel Type-

Housing: Steel C1038, not plated.  
Plunger assembly: Steel C1038, zinc plated.  
Handle: Thermoplastic, black.

#### Stainless Steel Type-

Housing: Stainless Steel AISI 303.  
Plunger assembly: Stainless Steel AISI 303.  
Handle: Thermoplastic, black.

#### Aluminium Type-

Housing: aluminium 6061-T6.

Plunger assembly: Steel C1038, zinc plated.

Handle: Thermoplastic, black.

### Technical Notes

Force required to lift handle approx. 2,5Kg.

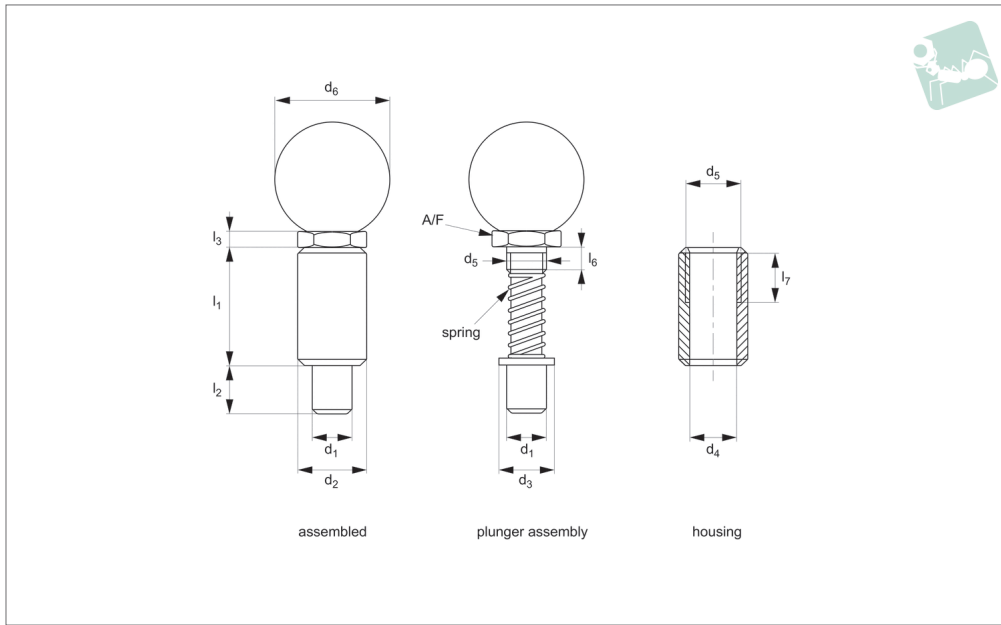
For both the steel and aluminium plungers, tensile strength is 620 N/mm<sup>2</sup> except for largest pin size being 400 N/mm<sup>2</sup>.

### Tips

Housing and plunger assembly supplied as

separate elements, this allows housing to be welded in place without damage to plastic handle of plunger assembly. Spring loaded pin can be „locked“ to enable pin to be held in retracted/ non-projecting position. Pull back lever, turn 90° to engage „locking“.

Order No.	Material	$d_1$ +0.05 -0.1	$d_2$ +0.00 -0.12	$l_1$	$l_2$	$l_3$	$l_4$	$l_5$	$l_6$	$l_7$	$d_3$	$d_4$	$d_5$	A/F
SL2018.I25-150-C	Steel	6,35 (1/4")	25.40	38.1	14.3	4.75	36.5	57.1	11.2	21.9	16.15	16.5	3/4"-10	22.3
SL2018.I37-150-C	Steel	9,53 (3/8")	25.40	38.1	14.3	4.75	36.5	57.1	11.2	21.9	16.15	16.5	3/4"-10	22.3
SL2018.I50-150-C	Steel	12,70 (1/2")	25.40	38.1	14.3	4.75	36.5	57.1	11.2	21.9	16.15	16.5	3/4"-10	22.3
SL2018.I50-225-C	Steel	12,70 (1/2")	25.40	57.1	14.3	4.75	36.5	57.1	11.2	21.9	16.15	16.5	3/4"-10	22.3
SL2018.I62-225-C	Steel	15,87 (5/8")	25.40	57.1	14.3	4.75	36.5	57.1	11.2	21.9	16.15	16.5	3/4"-10	22.3
SL2018.I25-150-A	Aluminium	6,35 (1/4")	25.40	38.1	14.3	4.75	36.5	57.1	11.2	21.9	16.15	16.5	3/4"-10	22.3
SL2018.I37-150-A	Aluminium	9,53 (3/8")	25.40	38.1	14.3	4.75	36.5	57.1	11.2	21.9	16.15	16.5	3/4"-10	22.3
SL2018.I50-150-A	Aluminium	12,70 (1/2")	25.40	38.1	14.3	4.75	36.5	57.1	11.2	21.9	16.15	16.5	3/4"-10	22.3
SL2018.I50-225-A	Aluminium	12,70 (1/2")	25.40	57.1	14.3	4.75	36.5	57.1	11.2	21.9	16.15	16.5	3/4"-10	22.3
SL2018.I62-225-A	Aluminium	15,87 (5/8")	25.40	57.1	14.3	4.75	36.5	57.1	11.2	21.9	16.15	16.5	3/4"-10	22.3
SL2018.I37-150-S	Stainless	9,53 (3/8")	25.40	38.1	14.3	4.75	36.5	57.1	11.2	21.9	16.15	16.5	3/4"-10	22.3
SL2018.I50-150-S	Stainless	12,70 (1/2")	25.40	38.1	14.3	4.75	36.5	57.1	11.2	21.9	16.15	16.5	3/4"-10	22.3
SL2018.I50-225-S	Stainless	12,70 (1/2")	25.40	57.1	14.3	4.75	36.5	57.1	11.2	21.9	16.15	16.5	3/4"-10	22.3



### SL2116

SPRING LOADED PINS

#### Material

##### Steel Type-

Housing: Steel C1038, not plated.

Plunger assembly: Steel C1038, zinc plated.

Handle: Thermoplastic, black.

##### Stainless Steel Type-

Housing: Stainless Steel AISI 303.

Plunger assembly: Stainless Steel AISI 303.

Handle: Thermoplastic, black.

##### Aluminium Type-

Housing: aluminium 6061-T6.

Plunger assembly: Steel C1038, zinc plated.

Handle: Thermoplastic, black.

#### Technical Notes

Force required to lift handle approx. 2,5Kg.

For both the steel and aluminium plungers, tensile strength is 620 N/mm<sup>2</sup> except for largest pin size being 400 N/mm<sup>2</sup>.

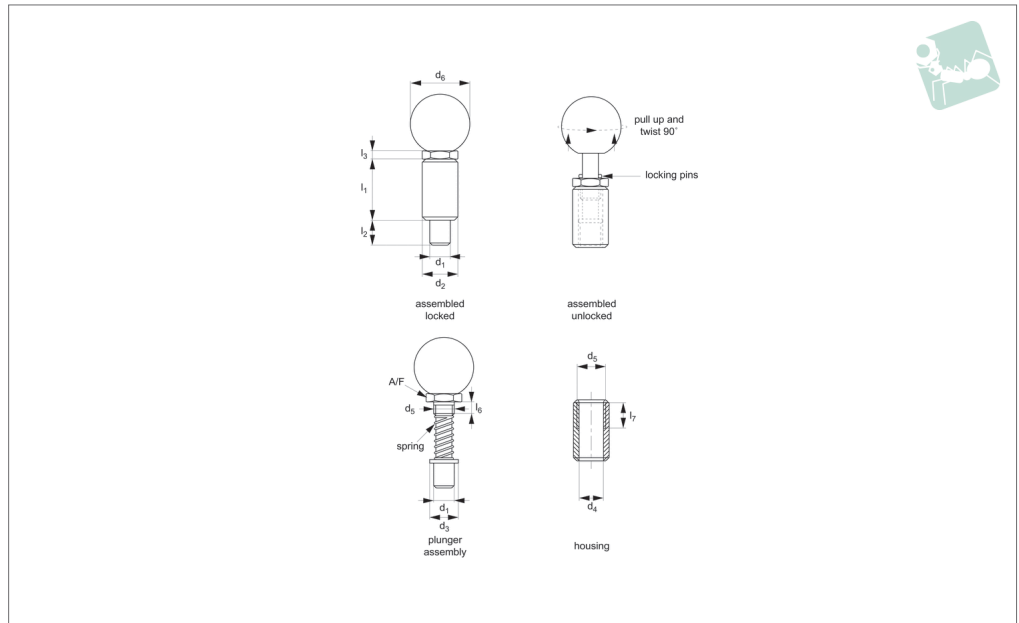
#### Tips

Housing and plunger assembly supplied as separate elements, this allows housing to be welded in place without damage to plastic handle of plunger assembly. Spring loaded pin is non-locking, pin simply springs back when lever released.

Order No.	Material	d <sub>1</sub> +0.05 -0.1	d <sub>2</sub> +0.00 -0.12	l <sub>1</sub>	l <sub>2</sub>	l <sub>3</sub>	l <sub>6</sub>	l <sub>7</sub>	d <sub>3</sub>	d <sub>4</sub>	d <sub>5</sub>	d <sub>6</sub>	A/F
SL2116.I25-150-C	Steel	6,35 (1/4")	25.40	38.1	14.3	4.75	11.2	21.9	16.15	16.5	3/4"-10	35.0	22.3
SL2116.I37-150-C	Steel	9,53 (3/8")	25.40	38.1	14.3	4.75	11.2	21.9	16.15	16.5	3/4"-10	35.0	22.3
SL2116.I50-150-C	Steel	12,70 (1/2")	25.40	38.1	14.3	4.75	11.2	21.9	16.15	16.5	3/4"-10	35.0	22.3
SL2116.I50-225-C	Steel	12,70 (1/2")	25.40	57.1	14.3	4.75	11.2	21.9	16.15	16.5	3/4"-10	35.0	22.3
SL2116.I62-225-C	Steel	15,87 (5/8")	25.40	57.1	14.3	4.75	11.2	21.9	16.15	16.5	3/4"-10	35.0	22.3
SL2116.I25-150-A	Aluminium	6,35 (1/4")	25.40	38.1	14.3	4.75	11.2	21.9	16.15	16.5	3/4"-10	35.0	22.3
SL2116.I37-150-A	Aluminium	9,53 (3/8")	25.40	38.1	14.3	4.75	11.2	21.9	16.15	16.5	3/4"-10	35.0	22.3
SL2116.I50-150-A	Aluminium	12,70 (1/2")	25.40	38.1	14.3	4.75	11.2	21.9	16.15	16.5	3/4"-10	35.0	22.3
SL2116.I50-225-A	Aluminium	12,70 (1/2")	25.40	57.1	14.3	4.75	11.2	21.9	16.15	16.5	3/4"-10	35.0	22.3
SL2116.I62-225-A	Aluminium	15,87 (5/8")	25.40	57.1	14.3	4.75	11.2	21.9	16.15	16.5	3/4"-10	35.0	22.3
SL2116.I37-150-S	Stainless	9,53 (3/8")	25.40	38.1	14.3	4.75	11.2	21.9	16.15	16.5	3/4"-10	35.0	22.3
SL2116.I50-150-S	Stainless	12,70 (1/2")	25.40	38.1	14.3	4.75	11.2	21.9	16.15	16.5	3/4"-10	35.0	22.3
SL2116.I50-225-S	Stainless	12,70 (1/2")	25.40	57.1	14.3	4.75	11.2	21.9	16.15	16.5	3/4"-10	35.0	22.3



## SL2118



### Material

#### Steel Type-

Housing: Steel C1038, not plated.  
Plunger assembly: Steel C1038, zinc plated.  
Handle: Thermoplastic, black.

#### Stainless Steel Type-

Housing: Stainless Steel AISI 303.  
Plunger assembly: Stainless Steel AISI 303.  
Handle: Thermoplastic, black.

#### Aluminium Type-

Housing: aluminium 6061-T6.

Plunger assembly: Steel C1038, zinc plated.

Handle: Thermoplastic, black.

### Technical Notes

Force required to lift handle approx. 2,5Kg.

For both the steel and aluminium plungers, tensile strength is 620 N/mm<sup>2</sup> except for largest pin size being 400 N/mm<sup>2</sup>.

### Tips

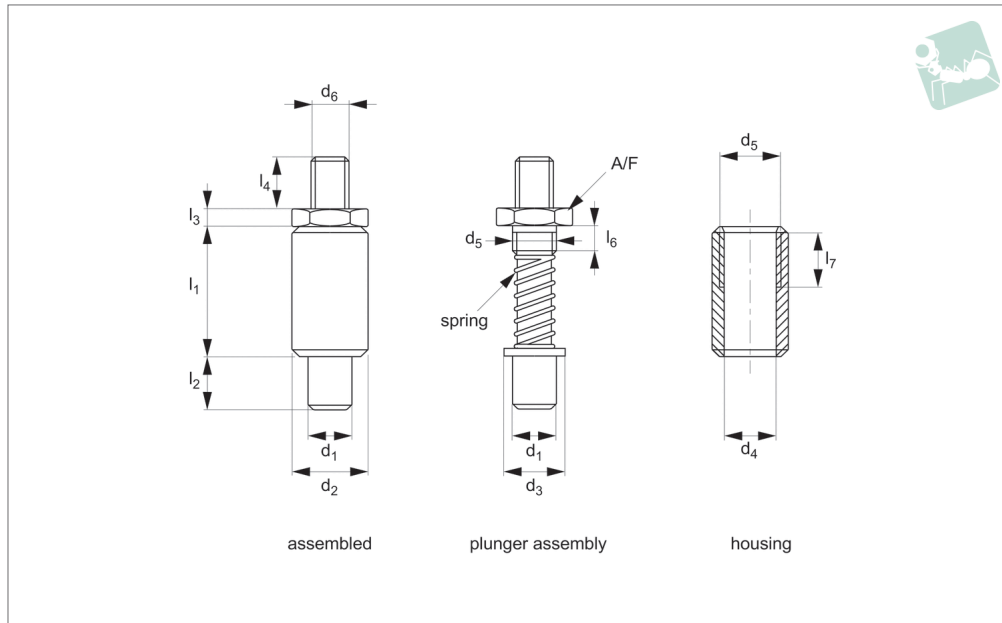
Housing and plunger assembly supplied as separate elements, this allows housing to be welded in place without damage to plastic handle of plunger assembly. Spring loaded pin can be „locked“ to enable pin to be held in retracted/ non-projecting position. Pull back lever, turn 90° to engage ‚locking‘.

Order No.	Material	$d_1$ +0.05 -0.1	$d_2$ +0.00 -0.12	$l_1$	$l_2$	$l_3$	$l_6$	$l_7$	$d_3$	$d_4$	$d_5$	$d_6$	A/F
SL2118.I25-150-C	Steel	6,35 (1/4")	25.40	38.1	14.3	4.75	11.2	21.9	16.15	16.5	3/4"-10	35.0	22.3
SL2118.I37-150-C	Steel	9,53 (3/8")	25.40	38.1	14.3	4.75	11.2	21.9	16.15	16.5	3/4"-10	35.0	22.3
SL2118.I50-150-C	Steel	12,70 (1/2")	25.40	38.1	14.3	4.75	11.2	21.9	16.15	16.5	3/4"-10	35.0	22.3
SL2118.I50-225-C	Steel	12,70 (1/2")	25.40	57.1	14.3	4.75	11.2	21.9	16.15	16.5	3/4"-10	35.0	22.3
SL2118.I62-225-C	Steel	15,87 (5/8")	25.40	57.1	14.3	4.75	11.2	21.9	16.15	16.5	3/4"-10	35.0	22.3
SL2118.I25-150-A	Aluminium	6,53 (1/4")	25.40	38.1	14.3	4.75	11.2	21.9	16.15	16.5	3/4"-10	35.0	22.3
SL2118.I37-150-A	Aluminium	9,53 (3/8")	25.40	38.1	14.3	4.75	11.2	21.9	16.15	16.5	3/4"-10	35.0	22.3
SL2118.I50-150-A	Aluminium	12,70 (1/2")	25.40	38.1	14.3	4.75	11.2	21.9	16.15	16.5	3/4"-10	35.0	22.3
SL2118.I50-225-A	Aluminium	12,70 (1/2")	25.40	57.1	14.3	4.75	11.2	21.9	16.15	16.5	3/4"-10	35.0	22.3
SL2118.I62-225-A	Aluminium	15,87 (5/8")	25.40	57.1	14.3	4.75	11.2	21.9	16.15	16.5	3/4"-10	35.0	22.3
SL2118.I37-150-S	Stainless	9,53 (3/8")	25.40	38.1	14.3	4.75	11.2	21.9	16.15	16.5	3/4"-10	35.0	22.3
SL2118.I50-150-S	Stainless	12,70 (1/2")	25.40	38.1	14.3	4.75	11.2	21.9	16.15	16.5	3/4"-10	35.0	22.3
SL2118.I50-225-S	Stainless	12,70 (1/2")	25.40	57.1	14.3	4.75	11.2	21.9	16.15	16.5	3/4"-10	35.0	22.3



# Spring Loaded Pin - Inch - Threaded non-locking

## Spring Loaded Pins



### SL2216

SPRING LOADED PINS

#### Material

##### Steel Type-

Housing: Steel C1038, not plated.

Plunger assembly: Steel C1038, zinc plated.

##### Stainless Steel Type-

Housing: Stainless Steel AISI 303.

Plunger assembly: Stainless Steel AISI 303.

##### Aluminium Type-

Housing: aluminium 6061-T6.

Plunger assembly: Steel C1038, zinc plated.

#### Technical Notes

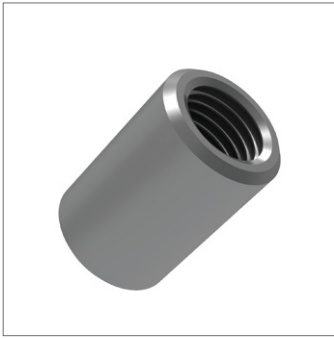
Force required to lift handle approx. 2,5Kg.

For both the steel and aluminium plungers, tensile strength is 620 N/mm<sup>2</sup> except for largest pin size being 400 N/mm<sup>2</sup>.

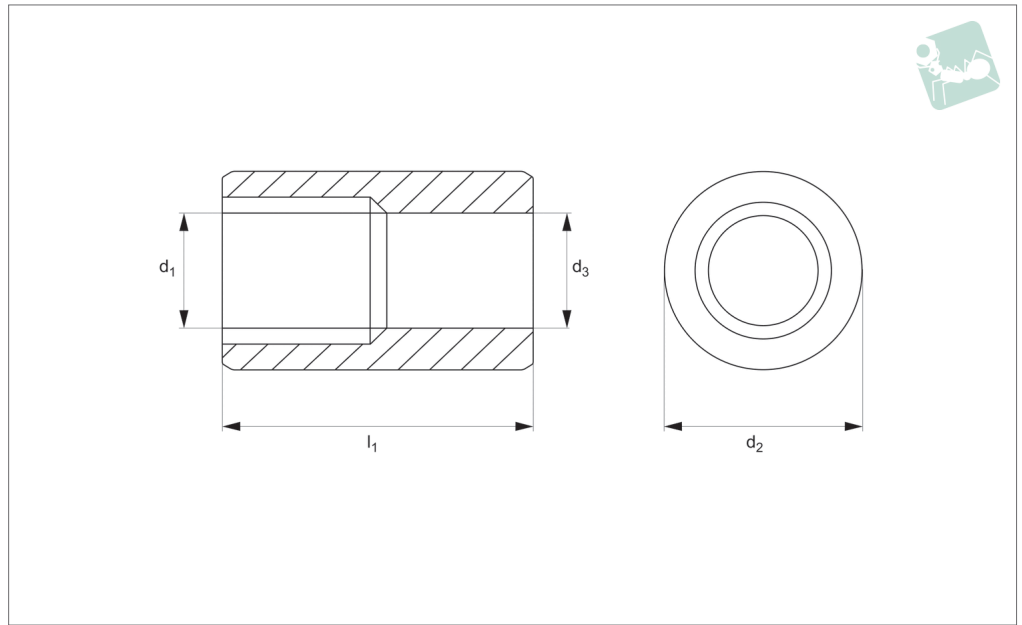
#### Tips

Housing and plunger assembly supplied as separate elements, this allows housing to be welded in place without damage to plastic handle of plunger assembly. Spring loaded pin is non-locking, pin simply springs back when lever released.

Order No.	Material	d <sub>1</sub> +0.05 -0.1	d <sub>2</sub> +0.00 -0.12	l <sub>1</sub>	l <sub>2</sub>	l <sub>3</sub>	l <sub>4</sub>	l <sub>6</sub>	l <sub>7</sub>	d <sub>3</sub>	d <sub>4</sub>	d <sub>5</sub>	d <sub>6</sub>	A/F
SL2216.I25-150-C	Steel	6,35 (1/4")	25.40	38.1	14.3	4.75	36.5	11.2	21.9	16.15	16.5	3/4"-10	3/8"-16	22.3
SL2216.I37-150-C	Steel	9,53 (3/8")	25.40	38.1	14.3	4.75	36.5	11.2	21.9	16.15	16.5	3/4"-10	3/8"-16	22.3
SL2216.I50-150-C	Steel	12,70 (1/2")	25.40	38.1	14.3	4.75	36.5	11.2	21.9	16.15	16.5	3/4"-10	3/8"-16	22.3
SL2216.I50-225-C	Steel	12,70 (1/2")	25.40	57.1	14.3	4.75	36.5	11.2	21.9	16.15	16.5	3/4"-10	3/8"-16	22.3
SL2216.I62-225-C	Steel	15,87 (5/8")	25.40	57.1	14.3	4.75	36.5	11.2	21.9	16.15	16.5	3/4"-10	3/8"-16	22.3
SL2216.I25-150-A	Aluminium	6,35 (1/4")	25.40	38.1	14.3	4.75	36.5	11.2	21.9	16.15	16.5	3/4"-10	3/8"-16	22.3
SL2216.I37-150-A	Aluminium	9,53 (3/8")	25.40	38.1	14.3	4.75	36.5	11.2	21.9	16.15	16.5	3/4"-10	3/8"-16	22.3
SL2216.I50-150-A	Aluminium	12,70 (1/2")	25.40	38.1	14.3	4.75	36.5	11.2	21.9	16.15	16.5	3/4"-10	3/8"-16	22.3
SL2216.I50-225-A	Aluminium	12,70 (1/2")	25.40	57.1	14.3	4.75	36.5	11.2	21.9	16.15	16.5	3/4"-10	3/8"-16	22.3
SL2216.I62-225-A	Aluminium	15,87 (5/8")	25.40	57.1	14.3	4.75	36.5	11.2	21.9	16.15	16.5	3/4"-10	3/8"-16	22.3
SL2216.I37-150-S	Stainless	9,53 (3/8")	25.40	38.1	14.3	4.75	36.5	11.2	21.9	16.15	16.5	3/4"-10	3/8"-16	22.3
SL2216.I50-150-S	Stainless	12,70 (1/2")	25.40	38.1	14.3	4.75	36.5	11.2	21.9	16.15	16.5	3/4"-10	3/8"-16	22.3
SL2216.I50-225-S	Stainless	12,70 (1/2")	25.40	57.1	14.3	4.75	36.5	11.2	21.9	16.15	16.5	3/4"-10	3/8"-16	22.3



**SL2316**



**Material**

**Steel Type -**

Steel, C1038, un-plated, aluminium 6061-T6.

**Stainless Steep Type-**

Stainless steel (AISI 303).

**Technical Notes**

Spare housing bodies. For spring loaded pins S to SL2216.

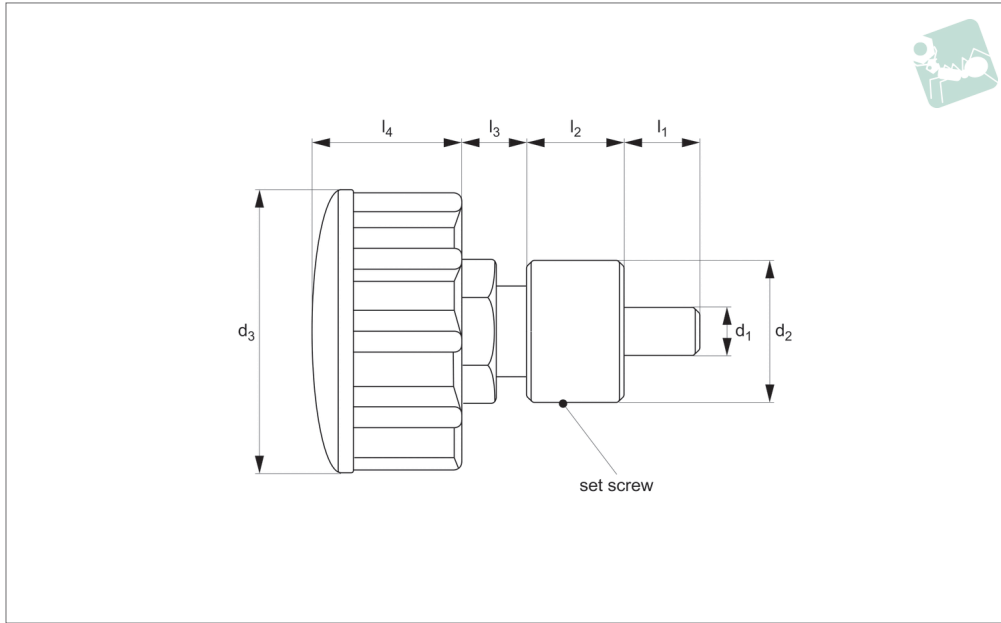
Order No.	Material	d <sub>1</sub> +0.00 -0.12	d <sub>2</sub>	l <sub>1</sub>	l <sub>2</sub>	d <sub>3</sub>
SL2316.075-150-C	Steel	3/4"-10	25.4	38.1	21.9	16.5
SL2316.075-250-C	Steel	3/4"-10	25.4	57.1	21.9	16.5
SL2316.075-150-A	Aluminium	3/4"-10	25.4	38.1	21.9	16.5
SL2316.075-250-A	Aluminium	3/4"-10	25.4	57.1	21.9	16.5
SL2316.075-150-S	Stainless	3/4"-10	25.4	38.1	21.9	16.5
SL2316.075-250-S	Stainless	3/4"-10	25.4	57.1	21.9	16.5



# Spring Loaded Pin - Adjustable

inch - grip handle, weldable

## Spring Loaded Pins



**SL2516**

SPRING LOADED PINS

### Material

Housing: Steel, 12L15, un-plated.  
 Plunger assembly: Steel, 1038, zinc plated.  
 Handle: Thermoplastic

### Technical Notes

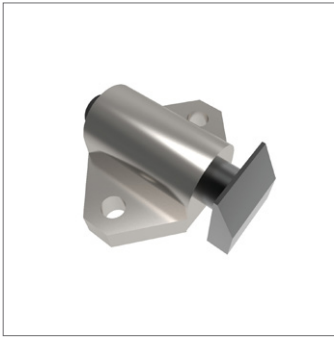
Ideal for applications where there is a

variance in the part being held. Once the pin is engaged, turning the knob allows the pin to tighten down on the work piece or further extend the plunger into the locating hole.

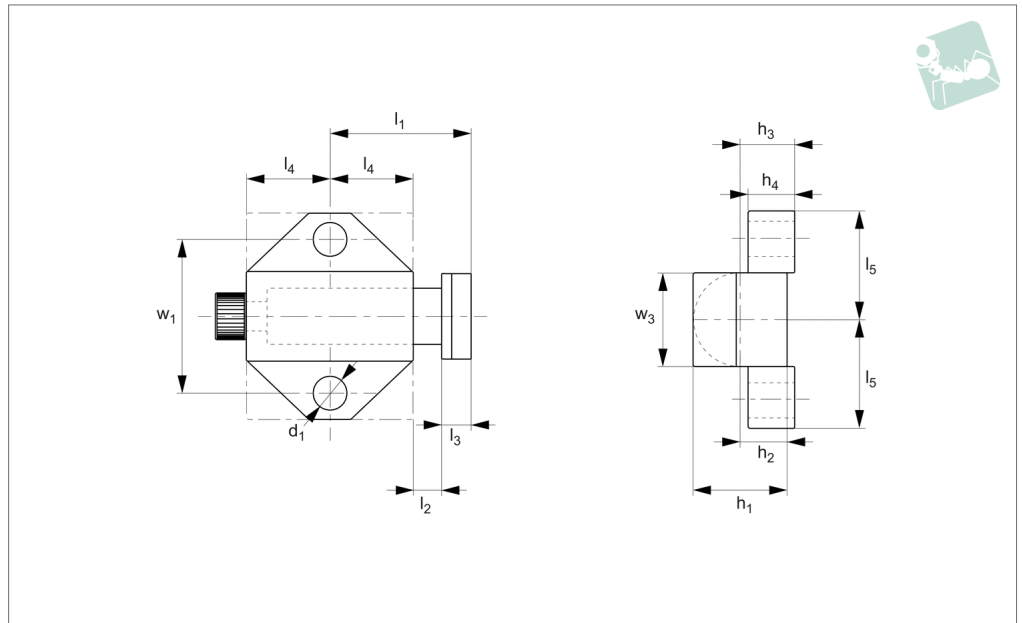
The set screw on the housing allows you to

lock the plunger at a set depth for repeated operations and prevents the mechanism from coming out of the housing.

Order No.	$d_1$ +0.05 -0.10	$d_2$	$l_1$	$l_2$	$l_3$	$l_4$	$d_3$	Adjustment
SL2516.025-143-C	6,35 (1/4")	28.5	14.3	19.0	12.7	28.58	57.1	15.8
SL2516.037-143-C	9,53 (3/8")	28.5	14.3	19.0	12.7	28.58	57.1	15.8
SL2516.050-143-C	12,7 (1/2")	28.5	14.3	19.0	12.7	28.58	57.1	15.8



**SL2610**



**Material**

Body: Aluminium.  
Nose: Steel 12L14.

clamping.

**Tips**

Ideal for holding and securing parts while

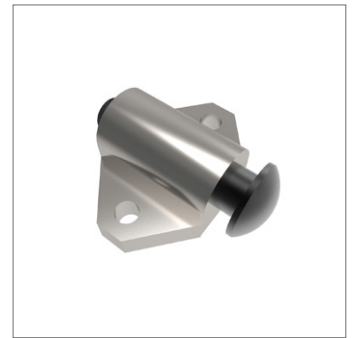
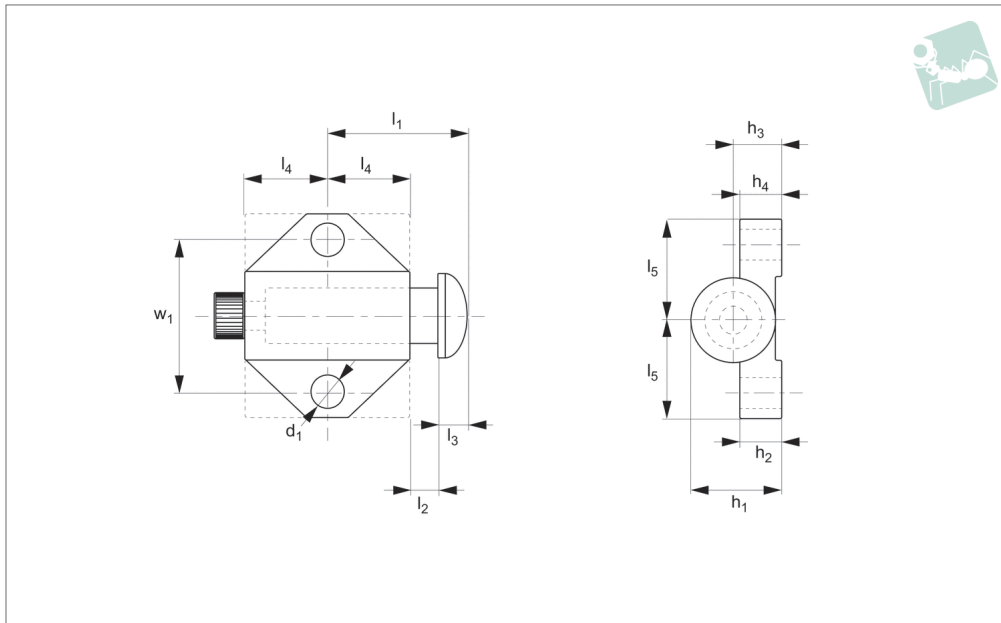
Order No.	Mounting base	d <sub>1</sub>	l <sub>1</sub>	l <sub>2</sub>	l <sub>3</sub>	l <sub>4</sub>	l <sub>5</sub>	h <sub>1</sub>	h <sub>2</sub>	h <sub>3</sub>	h <sub>4</sub>	w <sub>1</sub>	w <sub>3</sub>	Spring force f <sub>1</sub> N	Spring force f <sub>2</sub> N
SL2610.I12-043-A	Triangle	3.25	15.1	3.18	3.18	8.73	11.1	9.53	4.76	5.56	4.76	16.7	9.53	22.25	66.80
SL2610.I18-075-A	Square	4.90	23.8	4.76	6.35	12.7	19.1	15.9	7.94	5.56	6.35	28.6	15.9	8.900	115.7
SL2610.I25-100-A	Square	6.53	31.8	6.35	7.94	14.5	25.4	19.1	9.53	13.4	7.94	38.1	19.1	71.20	213.6





# Spring Stop - Inch round nose

# Spring Loaded Pins



**SL2615**

SPRING LOADED PINS

### Material

Body: Aluminium.  
Nose: Steel 12L14.

clamping.

### Tips

Ideal for holding and securing parts while

Order No.	Mounting base	d <sub>1</sub>	l <sub>1</sub>	l <sub>2</sub>	l <sub>3</sub>	l <sub>4</sub>	l <sub>5</sub>	h <sub>3</sub>	h <sub>4</sub>	h <sub>5</sub> mm	w <sub>1</sub>	w <sub>2</sub>	Spring force f <sub>1</sub> N	Spring force f <sub>2</sub> N
<b>SL2615.I12-043-A</b>	Triangle	3.25	15.08	3.18	3.18	8.73	11.1	5.56	4.76	5.55	16.67	9.53	22.3	66.75
<b>SL2615.I18-075-A</b>	Square	4.90	23.81	4.76	4.76	12.7	19.1	7.94	6.35	22.22	28.58	14.29	8.90	115.7
<b>SL2615.I25-100-A</b>	Square	6.53	29.77	6.35	6.35	17.5	25.4	13.5	7.94	34.13	38.10	20.64	71.2	213.6