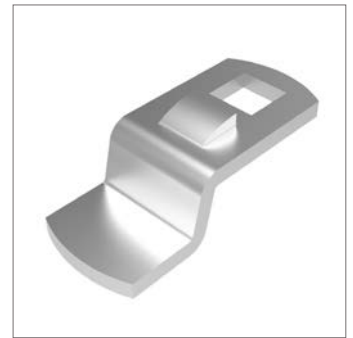
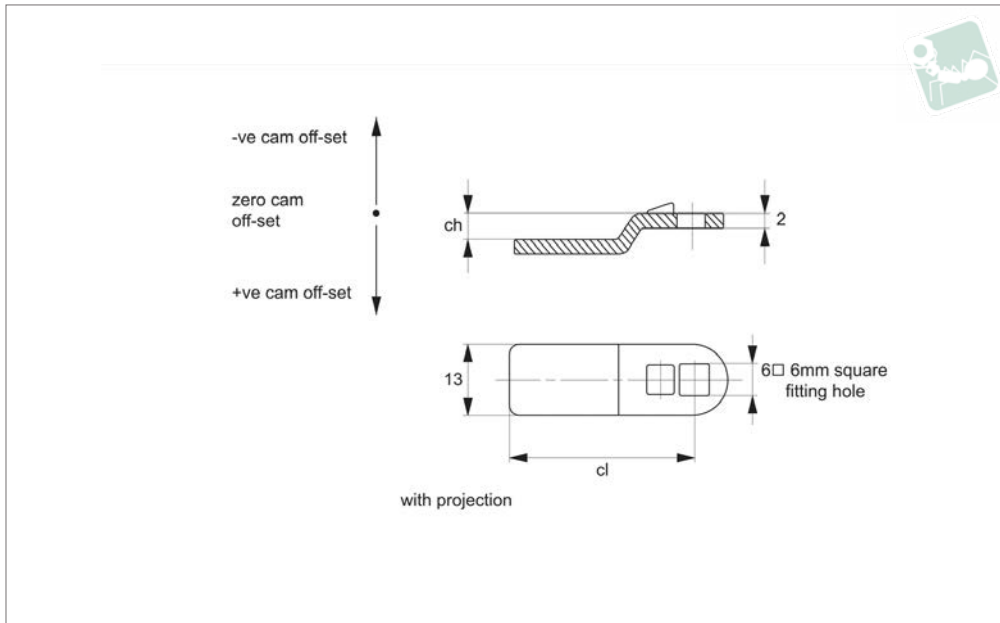




# Single Point Cams - 6 x 6 Sq. for cam latches CC0500, CC0502 and CC2060

## Latches



**CC0050**

LATCHES

### Material

Steel, zinc plated.

### Technical Notes

Use formula to calculate  $ch$  (required cam off-set), and select from product table below;

$ch = h - lh$  where;

$ch$  = required cam off-set/height.

$h$  = grip length (distance between inside of latch face and front of cam).

$lh$  = body length of cam latch/lock to be used (see individual latch/lock product table).

Refer to installation drawing below.

### Important Notes

With projection type ensures correct location and prevents cam rotating over  $45^\circ$ .

**See cam selection chart for specific latch/lock suitability.**

Sold subject to pack quantity.

| Order No.    | ch | cl | Where lh = 18 | Where lh = 18,5 | Where lh = 20 | Where lh = 25 | Where lh = 30 | Where lh = 40 | Where lh = 50 | Where lh = 60 |
|--------------|----|----|---------------|-----------------|---------------|---------------|---------------|---------------|---------------|---------------|
| CC0050.M0200 | 0  | 25 | h = 18        | h = 18.5        | h = 20        | h = 25        | h = 30        | h = 40        | h = 50        | h = 60        |
| CC0050.M0206 | 6  | 25 | 24            | 24.5            | 26            | 31            | 36            | 46            | 56            | 66            |
| CC0050.M0296 | -6 | 25 | 12            | 12.5            | 14            | 19            | 24            | 34            | 44            | 54            |
| CC0050.M0307 | 7  | 30 | 25            | 25.5            | 27            | 32            | 37            | 47            | 57            | 67            |

