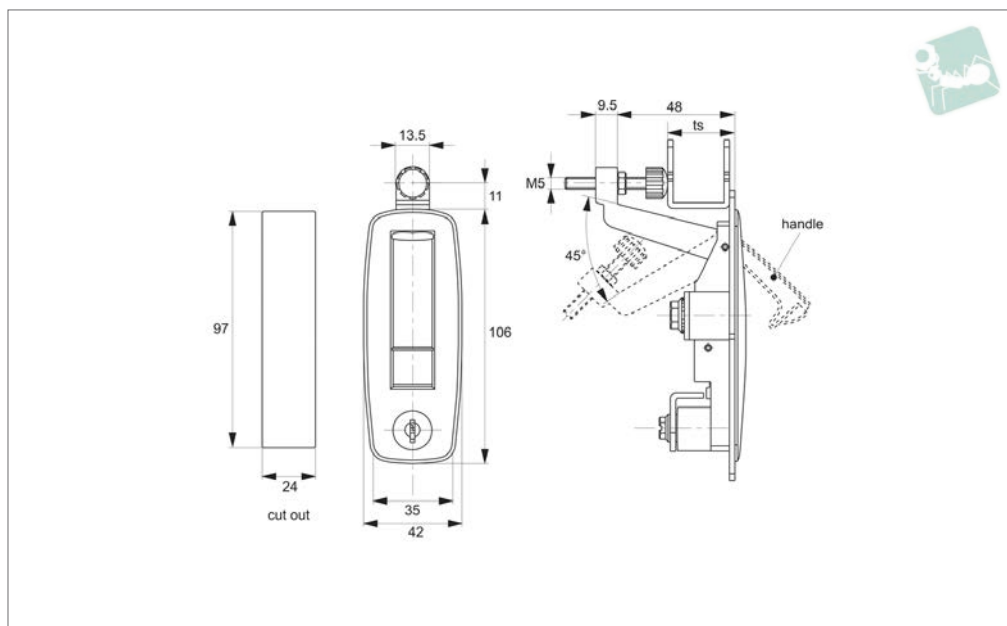




## Compression Locks

lever latch - adjustable grip - flush trigger - zinc

## Locks



### CC1210

#### Material

Body and handle and button: die cast zinc, black power coated.

Cylinder lock: die cast zinc.

Screw: steel, white zinc plated.

**Supplied with:** KEY.

#### Technical Notes

Grip length can be adjusted via M5 clamping screw to suit your application.

Suitable for panel thickness 20-35mm. For installation cut out see diagram.

#### Tips

Quick-open, easy assembling, by adjusting screw meets the needs of distance control.

Order No.	Finish	Lock type	ts grip adj.
CC1210.M0310	Black Coated	Std. Cylinder	20-35



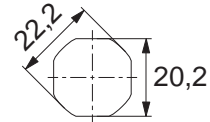
When selecting a Wixroyd Cam Latch for your application, you need to answer these questions:

1. Which installation cut out?
2. Which body style?
3. Which locking key?
4. Which accessories?
5. Which cam type and size?

## Step 1: Which installation cut out?

### Cut out

All our Flexi-System cam latches use a standard installation cut out 22,2 dia, 20,2 square, for maximum flexibility. We also provide a number of alternative cut out dimensions for legacy/historical installations.



flexi-system  
cut out

## Step 2: Which body style?

### Material and finish

Select from our variety of die cast zinc, polyamide plastic and stainless versions.



Die-cast  
zinc chrome  
plate



Die-cast  
zinc black  
coated



Polyamide  
black



Stainless  
steel

### Actuation and locking method

Standard insert driver type, cylinder lock or wing handle type.



Insert driver



Cylinder lock



Wing handle

### Number of latching points in application

Typically single point latching is required, but the Wixroyd Flexi-System also provides multi-point latching (typically 3 point - at lock point, top and bottom of cabinet).



Single point



Two point



Multi-point

## Step 3: Which locking key?

### Standard insert driver keys

Our range of insert driver cam latches require a simple key to actuate. Refer to part A0102 and A0103 for correct keys.



### Cylinder locking

Our cam locks with cylinder locks are supplied with two keys per lock. Available as keyed alike or keyed to differ locks.



## Step 4: Which accessories?

- Multi-point latching: use our rod set A0303 to A0325 for suitable rods and rod guides.
- Finger pulls: easily installed with any of our flexi-system cam bodies, finger pull no. A0352 is a simple, cost effective handle for your cabinets.
- Dust Cap: to reduce material ingress.








# Vixroyd Cam and Compression Latches

## product selection charts

## Cam Latches and Locks

Miscellaneous Cut out	Actuation Method			Body	Finishes	Cam Type	
	Insert Driver	Cylinder Lock	Manual/Grip			With Projection	W/O Projection
				Body length (mm)			IP Rating
<b>A1192 - Mini Cam Latch - Wing Handle - Fixed Grip</b>							
		✓		10	✓	✓	
Cams: Supplied - Keys: N/A							
<b>A1506 - Panel Latches - Fixed Grip</b>							
	✓			25	✓	✓	54
Cams: Supplied - Keys: A0102							
<b>A1520 - Cam Lock - Fixed Grip</b>							
	✓			18	✓	✓	
Cams: Supplied - Keys: A0102							
<b>A1546 - Panel Latch - Uncovered</b>							
		✓			✓	✓	
Cams: Supplied - Keys: N/A							
<b>A1561 - Panel Latch - with Cover</b>							
	✓			22,5	✓	✓	
Cams: Supplied - Keys: N/A							
<b>A1701 - Compression Latch - Lever Latch - Flush Trigger</b>							
	✓				✓	✓	
Cams: N/A - Keys: Supplied							
<b>A1707 - Compression Latch - Lever Latch - Raised Trigger</b>							
	✓			19	✓	✓	
Cams: Supplied - Keys: Supplied							
<b>A1751 - Compression Latch - Lever Latch</b>							
	✓				✓	✓	
Cams: N/A - Keys: Supplied							

Miscellaneous Cut out	Actuation Method			Body	Finishes	Cam Type	
	Insert Driver	Cylinder Lock	Manual/Grip			With Projection	W/O Projection
				Body length (mm)			IP Rating
<b>A4241 - Cam Latch - with Rod Control - Extended Cover</b>							
	✓				✓	✓	40
Cams: A0203, A0224, A0240 - Keys: A0102							
<b>A4260 - Cam Lock - with Rod Control - Wing Handle - Extended Cover</b>							
	✓				✓	✓	54
Cams: A0203, A0224, A0240 - Keys: A0102							
<b>A4221 - Cam Latch - with Rod Control - with Cover</b>							
	✓			Various	✓	✓	
Cams: A0203, A0224 - Keys: A0102							

LOCKS

