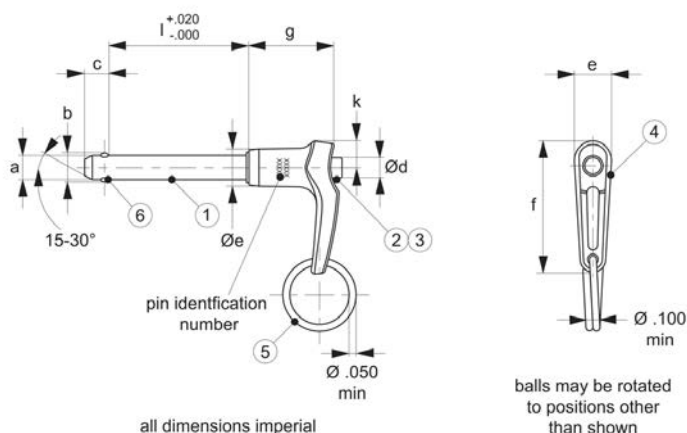




Aviation Pip-Pin, Standard LA Handle

single acting, quick release pins - **according to**

Quick Release Pins



QR5586

QUICK RELEASE PINS

Material

Shank (part 1) & spindle (part 2):

CRES 17-4PH (AMS 5643), heat treated per MIL-H-6875, condition H900, min. 40 HRC, passivated per AMS2700.

Spring (part 3, not shown):

CRES 302 (ASTM-A-313), heat treated per MIL-H-6875, passivated per AMS2700.

Handle (part 4):

A380 (QQ-A-591), anodized (black) per MIL-A-8625.

Attaching ring (part 5):

CRES 302 (ASTM-A-313), passivated per AMS2700.

Ball (locking element, part 6):

CRES CL440C (AMS5630), heat treated per MIL-H-6875, passivated per AMS2700.

Technical Notes

Wixroyd Aviation Pip-pins manufactured to Aviation Norm NASM 17986 (former norm: MS 17986) and tested to NAS 1332.

Manufacture certified & assessed to EN9100D by EASE (European Aerospace Supplier Evaluation).

Temp. range -22°F to 302°F

Pressing = unlocking.

Releasing = locking.

Pip-pins are used for frequently repeated operations such as quick fastening, locking, adjusting, changing and securing. All dimensions shown are imperial.

Tips

We can manufacture specials (both metric & imperial) to your drawing, and are certified to produce to NASM standards.

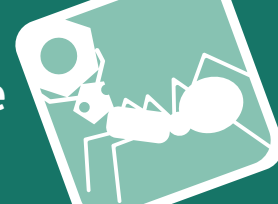
Wixroyd Aviation Pip-Pins can be produced within the following dimensions:

+ diameter: from 3/16" to 1"

+ grip length: from 0.3" to 9.9"

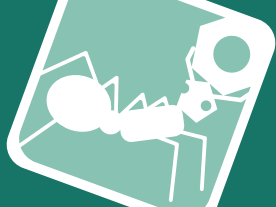
Quick production time on small batches.

Order No.	Dia. Ø nom.	Grip l	b	c	Ø d max.	Ø e max.	Weight g
QR5586.A005	3/16	0.5	0.220	0.260	0.310	0.500	23
QR5586.A008	3/16	0.8	0.220	0.260	0.310	0.500	26
QR5586.A010	3/16	1.0	0.220	0.260	0.310	0.500	26
QR5586.A013	3/16	1.3	0.220	0.260	0.310	0.500	28
QR5586.A014	3/16	1.4	0.220	0.260	0.310	0.500	28
QR5586.A017	3/16	1.7	0.220	0.260	0.310	0.500	27
QR5586.B012	1/4	1.2	0.289	0.290	0.310	0.500	32
QR5586.B015	1/4	1.5	0.289	0.290	0.310	0.500	33
QR5586.B016	1/4	1.6	0.289	0.290	0.310	0.500	33
QR5586.B021	1/4	2.1	0.289	0.290	0.310	0.500	36
QR5586.C004	5/16	0.4	0.375	0.330	0.310	0.500	29
QR5586.C006	5/16	0.6	0.375	0.330	0.310	0.500	30
QR5586.C010	5/16	1.0	0.375	0.330	0.310	0.500	34
QR5586.C013	5/16	1.3	0.375	0.330	0.310	0.500	37
QR5586.C016	5/16	1.6	0.375	0.330	0.310	0.500	40
QR5586.C018	5/16	1.8	0.375	0.330	0.310	0.500	43
QR5586.C020	5/16	2.0	0.375	0.330	0.310	0.500	41
QR5586.C023	5/16	2.3	0.375	0.330	0.310	0.500	46
QR5586.C029	5/16	2.9	0.375	0.330	0.310	0.500	54
QR5586.C030	5/16	3.0	0.375	0.330	0.310	0.500	53
QR5586.C033	5/16	3.3	0.375	0.330	0.310	0.500	57



Order No.	Dia. Ø nom.	Grip l	b	c	Ø d max.	Ø e max.	Weight g
QR5586.C040	5/16	4.0	0.375	0.330	0.310	0.500	64
QR5586.D010	3/8	1.0	0.440	0.365	0.390	0.625	49
QR5586.D015	3/8	1.5	0.440	0.365	0.390	0.625	59
QR5586.D024	3/8	2.4	0.440	0.365	0.390	0.625	71
QR5586.D026	3/8	2.6	0.440	0.365	0.390	0.625	73
QR5586.E012	7/16	1.2	0.509	0.380	0.390	0.625	61
QR5586.E040	7/16	4.0	0.509	0.380	0.390	0.625	115
QR5586.E055	7/16	5.5	0.509	0.380	0.390	0.625	146
QR5586.F010	1/2	1.0	0.594	0.460	0.565	0.800	83
QR5586.F015	1/2	1.5	0.594	0.460	0.565	0.800	95
QR5586.F019	1/2	1.9	0.594	0.460	0.565	0.800	103
QR5586.F042	1/2	4.2	0.594	0.460	0.565	0.800	160
QR5586.G017	9/16	1.7	0.666	0.510	0.565	0.800	116
QR5586.G025	9/16	2.5	0.666	0.510	0.565	0.800	140
QR5586.G040	9/16	4.0	0.666	0.510	0.565	0.800	189
QR5586.G060	9/16	6.0	0.666	0.510	0.565	0.800	249
QR5586.G075	9/16	7.5	0.666	0.510	0.565	0.800	298

Order No.	Ø f max.	g max.	h min.	k max.	Shearing resistance, double lb min.	Location hole dia. max.	MS Part No.
QR5586.A005	1.80	1.27	0.76	0.34	5.150	0.1940	MS17986C305
QR5586.A008	1.80	1.27	0.76	0.34	5.150	0.1940	MS17986C308
QR5586.A010	1.80	1.27	0.76	0.34	5.150	0.1940	MS17986C310
QR5586.A013	1.80	1.27	0.76	0.34	5.150	0.1940	MS17986C313
QR5586.A014	1.80	1.27	0.76	0.34	5.150	0.1940	MS17986C314
QR5586.A017	1.80	1.27	0.76	0.34	5.150	0.1940	MS17986C317
QR5586.B012	1.80	1.27	0.76	0.34	9.200	0.2540	MS17986C412
QR5586.B015	1.80	1.27	0.76	0.34	9.200	0.2540	MS17986C415
QR5586.B016	1.80	1.27	0.76	0.34	9.200	0.2540	MS17986C416
QR5586.B021	1.80	1.27	0.76	0.34	9.200	0.2540	MS17986C421
QR5586.C004	1.80	1.27	0.76	0.34	14400	0.3165	MS17986C504
QR5586.C006	1.80	1.27	0.76	0.34	14400	0.3165	MS17986C506
QR5586.C010	1.80	1.27	0.76	0.34	14400	0.3165	MS17986C510
QR5586.C013	1.80	1.27	0.76	0.34	14400	0.3165	MS17986C513
QR5586.C016	1.80	1.27	0.76	0.34	14400	0.3165	MS17986C516
QR5586.C018	1.80	1.27	0.76	0.34	14400	0.3165	MS17986C518
QR5586.C020	1.80	1.27	0.76	0.34	14400	0.3165	MS17986C520
QR5586.C023	1.80	1.27	0.76	0.34	14400	0.3165	MS17986C523
QR5586.C029	1.80	1.27	0.76	0.34	14400	0.3165	MS17986C529
QR5586.C030	1.80	1.27	0.76	0.34	14400	0.3165	MS17986C530
QR5586.C033	1.80	1.27	0.76	0.34	14400	0.3165	MS17986C533
QR5586.C040	1.80	1.27	0.76	0.34	14400	0.3165	MS17986C540
QR5586.D010	2.03	1.45	0.85	0.39	20700	0.3790	MS17986C610
QR5586.D015	2.03	1.45	0.85	0.39	20700	0.3790	MS17986C615
QR5586.D024	2.03	1.45	0.85	0.39	20700	0.3790	MS17986C624
QR5586.D026	2.03	1.45	0.85	0.39	20700	0.3790	MS17986C626
QR5586.E012	2.03	1.47	0.85	0.39	28500	0.4425	MS17986C712
QR5586.E040	2.03	1.47	0.85	0.39	28500	0.4425	MS17986C740
QR5586.E055	2.03	1.47	0.85	0.39	28500	0.4425	MS17986C755
QR5586.F010	2.36	1.60	0.85	0.50	36900	0.5050	MS17986C810
QR5586.F015	2.36	1.60	0.85	0.50	36900	0.5050	MS17986C815
QR5586.F019	2.36	1.60	0.85	0.50	36900	0.5050	MS17986C819
QR5586.F042	2.36	1.60	0.85	0.50	36900	0.5050	MS17986C842
QR5586.G017	2.36	1.60	0.85	0.50	46700	0.5675	MS17986C917
QR5586.G025	2.36	1.60	0.85	0.50	46700	0.5675	MS17986C925
QR5586.G040	2.36	1.60	0.85	0.50	46700	0.5675	MS17986C940
QR5586.G060	2.36	1.60	0.85	0.50	46700	0.5675	MS17986C960
QR5586.G075	2.36	1.60	0.85	0.50	46700	0.5675	MS17986C975



Wixroyd Flight Pin Range - Certified to Aviation Standards

With many years experience producing an extensive range of standard Pip-pins (also know as quick release pins or ball lock pins) we are now able to offer of Aviation Standard approved Pip-pins, manufactured according to NASM norms (formerly MS norms) and tested to NAS 1332 standards.



33600 - Single acting Pip-pin, standard B handle



33610 - Single acting Pip-pin, standard TA handle



33620 - Single acting Pip-pin, standard LA handle



33630 - Single acting Pip-pin, standard R handle

Expanding Range

- Interior panel attachment
- Baby bassinet pin
- Curtain track attachment

- Curtain track support pins
- TV monitor attachment
- Folding table assembly (e.g. First Class Cabins)

Wide Range of Aviation Applications

The Wixroyd Aviation Pip-pin range is produced according to NASM norms, and tested to NAS standards. Our manufacturing processes have been assessed and certified by EASE (European Aerospace Supplier Evaluation) to EN9100D.

All our Aviation Pip-pins are individually marked to enable identification of their production lot number.

Aviation Approved

Yes! The product sizes shown on the following pages, with a cross reference to the NASM part code for ease of identification, are all available from stock for delivery within 5 days.

In-Stock and Available?

We have extensive knowledge and experience in designing, producing and assembling bespoke design pip-pins and ball lock pins in both imperial and metric sizes. We produce under a fully certified manufacturing process, both to our own high standard or to meet Aviation standards.

Please contact our technical team to discuss your requirements (tel. 0845 26 66 577) or email a drawing to info@wixroyd.com

Special Designs

For our full range visit:
wixroyd.com

Products Wixroyd Design Elements

Free Literature CAD download Discover Login Basket

Search 0333 207 4497

33600 Aviation Pip-Pin, Standard B Handle
single acting, quick release pins - according to NASM 17984, material: Steel.

pin identification number

grip length

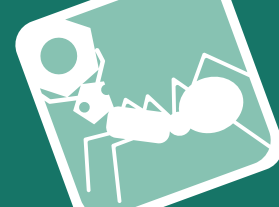
15-30°

all dimensions imperial

balls may be rotated to positions other than shown

Download product datasheet Download FREE CAD





Wixroyd Flight Pin Range - Certified to Aviation Standards

Your normal experience may be that imperial Aviation Standard Pip-pins are hard to obtain; price prohibitive, and delivery times far too long. The range of Wixroyd Aviation Pip-pins, in a variety of imperial dimensions, has been designed to solve these problems - we hold a wide, and ever increasing range of sizes ex-stock for immediate delivery - no more 6-8 week lead time!

With many years experience producing an extensive range of standard Pip-pins (also know as quick release pins or ball lock pins) we are now able to offer of Aviation Standard approved Pip-pins, manufactured according to NASM norms (formerly MS norms) and tested to NAS 1332 standards.

Wide Range of Aviation Applications

- Interior panel attachment
- Baby bassinet pin
- Curtain track attachment
- Curtain track support pins
- TV monitor attachment
- Folding table assembly (e.g. First Class Cabins)

In-stock and Available?

Yes! The product sizes shown on the following pages, with a cross reference to the NASM part code for ease of identification, are all available from stock for delivery within 5 days.

Materials

Our Aviation Pip-pins are manufactured to NASM norms, and we follow the material specification of these norms, which means you can feel safe in purchasing a part which is to specification - both in materials and strength.

Aviation Approved



The new Wixroyd Aviation Pip-pin range is produced according to NASM norms, and tested to NAS standards. Our manufacturing processes have been assessed and certified by EASE (European Aerospace Supplier Evaluation) to EN9100D.

Identifying Production Batches

All our Aviation Pip-pins are individually marked to enable identification of their production lot number. Marking allows identification of:

- NASM Standard Number
- Material Grade
- Pin/shank diameter
- Grip length
- Company identification
- Production lot number.

Special Designs

We have extensive knowledge and experience in designing, producing and assembling bespoke design pip-pins and ball lock pins in both imperial and metric sizes. We produce under a fully certified manufacturing process, both to our own high standard or to meet Aviation standards.

We can customise to meet your needs:

- Changes in grip/handle type
- Material variations
- Changes of functional dimensions; pin diameter, pin grip length

Please contact our technical team to discuss your requirements (tel. 0845 26 66 577) or email a drawing to info@wixroyd.com

Expanding Range



Single acting Pip-pin, standard B handle



Single acting Pip-pin, standard TA handle



Single acting Pip-pin, standard LA handle



Single acting Pip-pin, standard R handle