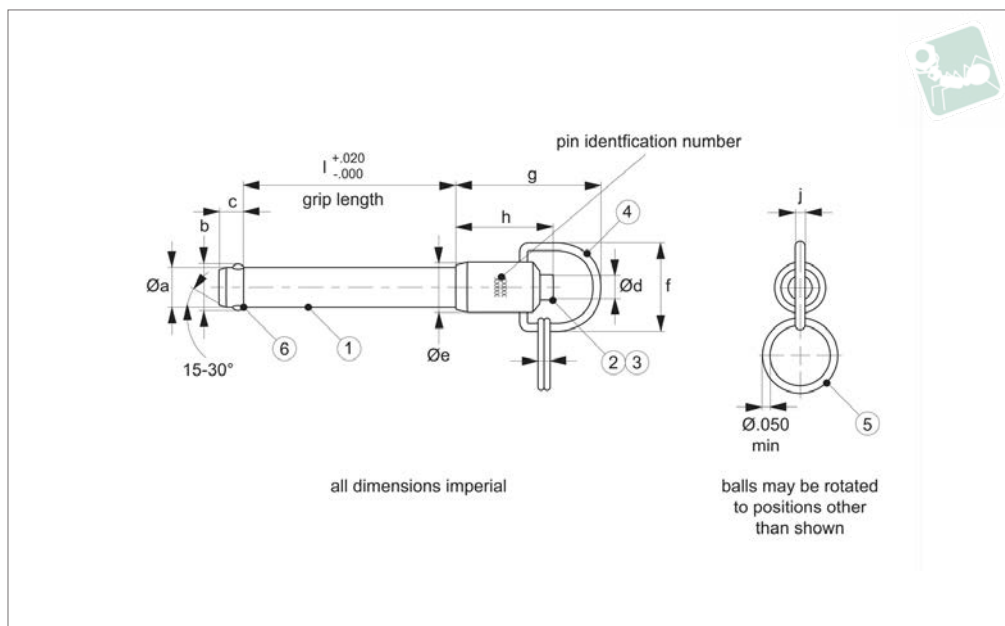




# Aviation Pip-Pin, Standard R Handle

single acting, quick release pins - **according to**

## Quick Release Pins



**QR5587**

QUICK RELEASE PINS

### Material

#### Shank (part 1) & spindle (part 2):

CRES 17-4PH (AMS 5643), heat treated per MIL-H-6875, condition H900, min. 40 HRC, passivated per AMS2700.

#### Spring (part 3, not shown):

CRES 302 (ASTM-A-313), heat treated per MIL-H-6875, passivated per AMS2700.

#### Handle (part 4):

CRES 302 (ASTM-A-313), passivated per AMS2700.

#### Attaching ring (part 5):

CRES 302 (ASTM-A-313), passivated per AMS2700.

#### Ball (locking element, part 6):

CRES CL440C (AMS5630), heat treated per MIL-H-6875, passivated per AMS2700.

### Technical Notes

Wixroyd Aviation Pip-pins manufactured to Aviation Norm NASM 17987 (former norm: MS 17987) and tested to NAS 1332.

Manufacture certified & assessed to EN9100D by EASE (European Aerospace Supplier Evaluation).

Temp. range -22°F to 302°F

Pressing = unlocking.

Releasing = locking.

Pip-pins are used for frequently repeated operations such as quick fastening, locking, adjusting, changing and securing. All dimensions shown are imperial.

### Tips

We can manufacture specials (both metric & imperial) to your drawing, and are certified to produce to NASM standards.

Wixroyd Aviation Pip-Pins can be produced within the following dimensions:

+ diameter: from 3/16" to 1"

+ grip length: from 0.3" to 9.9"

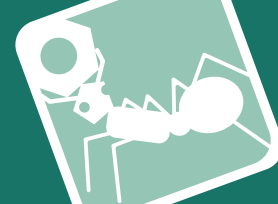
Quick production time on small batches.

Order No.	Dia. Ø nom.	Grip l	b	c	Ø d max.	Ø e max.	Weight g
QR5587.A008	3/16	0.8	,594	,460	,565	0.53	24
QR5587.A009	3/16	0.9	,594	,460	,565	0.53	24
QR5587.A010	3/16	1.0	,594	,460	,565	0.53	24
QR5587.A011	3/16	1.1	,594	,460	,565	0.53	25
QR5587.A012	3/16	1.2	,594	,460	,565	0.53	25
QR5587.A015	3/16	1.5	,594	,460	,565	0.53	26
QR5587.A016	3/16	1.6	,594	,460	,565	0.53	26
QR5587.A025	3/16	2.5	,594	,460	,565	0.53	30
QR5587.B005	1/4	0.5	,594	,460	,565	0.53	24
QR5587.B006	1/4	0.6	,594	,460	,565	0.53	25
QR5587.B007	1/4	0.7	,594	,460	,565	0.53	26
QR5587.B008	1/4	0.8	,594	,460	,565	0.53	27
QR5587.B009	1/4	0.9	,594	,460	,565	0.53	27
QR5587.B010	1/4	1.0	,594	,460	,565	0.53	27
QR5587.B011	1/4	1.1	,594	,460	,565	0.53	28
QR5587.B012	1/4	1.2	,594	,460	,565	0.53	29
QR5587.B014	1/4	1.4	,594	,460	,565	0.53	30
QR5587.B015	1/4	1.5	,594	,460	,565	0.53	31
QR5587.B017	1/4	1.7	,594	,460	,565	0.53	32
QR5587.B019	1/4	1.9	,594	,460	,565	0.53	33
QR5587.B022	1/4	2.2	,594	,460	,565	0.53	36

# Quick Release Pins

## Aviation Pip-Pin, Standard R Handle

single acting, quick release pins - according to



QUICK RELEASE PINS

Order No.	Dia. Ø nom.	Grip l	b	c	Ø d max.	Ø e max.	Weight g
QR5587.B040	1/4	4.0	,594	,460	,565	0.53	47
QR5587.C006	5/16	0.6	,594	,460	,565	0.59	30
QR5587.C007	5/16	0.7	,594	,460	,565	0.59	31
QR5587.C008	5/16	0.8	,594	,460	,565	0.59	33
QR5587.C009	5/16	0.9	,594	,460	,565	0.59	34
QR5587.C011	5/16	1.1	,594	,460	,565	0.59	35
QR5587.C012	5/16	1.2	,594	,460	,565	0.59	36
QR5587.C013	5/16	1.3	,594	,460	,565	0.59	38
QR5587.C018	5/16	1.8	,594	,460	,565	0.59	42
QR5587.C020	5/16	2.0	,594	,460	,565	0.59	43
QR5587.C023	5/16	2.3	,594	,460	,565	0.59	46
QR5587.C026	5/16	2.6	,594	,460	,565	0.59	48
QR5587.C033	5/16	3.3	,594	,460	,565	0.59	56
QR5587.C035	5/16	3.5	,594	,460	,565	0.59	59
QR5587.C067	5/16	6.7	,594	,460	,565	0.59	92
QR5587.D008	3/8	0.8	,594	,460	,565	0.65	49
QR5587.D009	3/8	0.9	,594	,460	,565	0.65	50
QR5587.D010	3/8	1.0	,594	,460	,565	0.65	52
QR5587.D011	3/8	1.1	,594	,460	,565	0.65	53
QR5587.D012	3/8	1.2	,594	,460	,565	0.65	54
QR5587.D013	3/8	1.3	,594	,460	,565	0.65	55
QR5587.D014	3/8	1.4	,594	,460	,565	0.65	55
QR5587.D016	3/8	1.6	,594	,460	,565	0.65	61
QR5587.D026	3/8	2.6	,594	,460	,565	0.65	73
QR5587.D030	3/8	3.0	,594	,460	,565	0.65	80
QR5587.D031	3/8	3.1	,594	,460	,565	0.65	82
QR5587.E008	7/16	0.8	,594	,460	,565	0.71	56
QR5587.E020	7/16	2.0	,594	,460	,565	0.71	81
QR5587.E022	7/16	2.2	,594	,460	,565	0.71	81
QR5587.E024	7/16	2.4	,594	,460	,565	0.71	88
QR5587.E026	7/16	2.6	,594	,460	,565	0.71	88
QR5587.F011	1/2	1.1	,594	,460	,565	0.80	88
QR5587.F012	1/2	1.2	,594	,460	,565	0.80	91
QR5587.F013	1/2	1.3	,594	,460	,565	0.80	93
QR5587.F014	1/2	1.4	,594	,460	,565	0.80	96
QR5587.F015	1/2	1.5	,594	,460	,565	0.80	98
QR5587.F033	1/2	3.3	,594	,460	,565	0.80	141
QR5587.F039	1/2	3.9	,594	,460	,565	0.80	160
QR5587.F050	1/2	5.0	,594	,460	,565	0.80	187
QR5587.F053	1/2	5.3	,594	,460	,565	0.80	186
QR5587.F065	1/2	6.5	,594	,460	,565	0.80	215
QR5587.F080	1/2	8.0	,594	,460	,565	0.80	260
QR5587.G013	9/16	1.3	,594	,460	,565	0.84	120
QR5587.G030	9/16	3.0	,594	,460	,565	0.84	166
QR5587.G037	9/16	3.7	,594	,460	,565	0.84	183

Order No.	Ø f max.	g max.	h min.	Shearing resistance, double lb min.	Location hole dia. max.	MS Part No.
QR5587.A008	1.45	0.73	0.08	5.150	0.1940	MS17987C308
QR5587.A009	1.45	0.73	0.08	5.150	0.1940	MS17987C309
QR5587.A010	1.45	0.73	0.08	5.150	0.1940	MS17987C310
QR5587.A011	1.45	0.73	0.08	5.150	0.1940	MS17987C311
QR5587.A012	1.45	0.73	0.08	5.150	0.1940	MS17987C312
QR5587.A015	1.45	0.73	0.08	5.150	0.1940	MS17987C315
QR5587.A016	1.45	0.73	0.08	5.150	0.1940	MS17987C316
QR5587.A025	1.45	0.73	0.08	5.150	0.1940	MS17987C325
QR5587.B005	1.50	0.78	0.08	9.200	0.2540	MS17987C405
QR5587.B006	1.50	0.78	0.08	9.200	0.2540	MS17987C406
QR5587.B007	1.50	0.78	0.08	9.200	0.2540	MS17987C407
QR5587.B008	1.50	0.78	0.08	9.200	0.2540	MS17987C408
QR5587.B009	1.50	0.78	0.08	9.200	0.2540	MS17987C409
QR5587.B010	1.50	0.78	0.08	9.200	0.2540	MS17987C410
QR5587.B011	1.50	0.78	0.08	9.200	0.2540	MS17987C411
QR5587.B012	1.50	0.78	0.08	9.200	0.2540	MS17987C412
QR5587.B014	1.50	0.78	0.08	9.200	0.2540	MS17987C414
QR5587.B015	1.50	0.78	0.08	9.200	0.2540	MS17987C415
QR5587.B017	1.50	0.78	0.08	9.200	0.2540	MS17987C417



# Aviation Pip-Pin, Standard R Handle

single acting, quick release pins - **according to**

## Quick Release Pins

Order No.	Ø f max.	g max.	h min.	Shearing resistance, double lb min.	Location hole dia. max.	MS Part No.
QR5587.B019	1.50	0.78	0.08	9.200	0.2540	MS17987C419
QR5587.B022	1.50	0.78	0.08	9.200	0.2540	MS17987C422
QR5587.B040	1.50	0.78	0.08	9.200	0.2540	MS17987C440
QR5587.C006	1.65	0.83	0.08	14400	0.3165	MS17987C506
QR5587.C007	1.65	0.83	0.08	14400	0.3165	MS17987C507
QR5587.C008	1.65	0.83	0.08	14400	0.3165	MS17987C508
QR5587.C009	1.65	0.83	0.08	14400	0.3165	MS17987C509
QR5587.C011	1.65	0.83	0.08	14400	0.3165	MS17987C511
QR5587.C012	1.65	0.83	0.08	14400	0.3165	MS17987C512
QR5587.C013	1.65	0.83	0.08	14400	0.3165	MS17987C513
QR5587.C018	1.65	0.83	0.08	14400	0.3165	MS17987C518
QR5587.C020	1.65	0.83	0.08	14400	0.3165	MS17987C520
QR5587.C023	1.65	0.83	0.08	14400	0.3165	MS17987C523
QR5587.C026	1.65	0.83	0.08	14400	0.3165	MS17987C526
QR5587.C033	1.65	0.83	0.08	14400	0.3165	MS17987C533
QR5587.C035	1.65	0.83	0.08	14400	0.3165	MS17987C535
QR5587.C067	1.65	0.83	0.08	14400	0.3165	MS17987C567
QR5587.D008	1.65	0.94	0.08	20700	0.3790	MS17987C608
QR5587.D009	1.65	0.94	0.08	20700	0.3790	MS17987C609
QR5587.D010	1.65	0.94	0.08	20700	0.3790	MS17987C610
QR5587.D011	1.65	0.94	0.08	20700	0.3790	MS17987C611
QR5587.D012	1.65	0.94	0.08	20700	0.3790	MS17987C612
QR5587.D013	1.65	0.94	0.08	20700	0.3790	MS17987C613
QR5587.D014	1.65	0.94	0.08	20700	0.3790	MS17987C614
QR5587.D016	1.65	0.94	0.08	20700	0.3790	MS17987C616
QR5587.D026	1.65	0.94	0.08	20700	0.3790	MS17987C626
QR5587.D030	1.65	0.94	0.08	20700	0.3790	MS17987C630
QR5587.D031	1.65	0.94	0.08	20700	0.3790	MS17987C631
QR5587.E008	1.85	0.98	0.08	28500	0.4425	MS17987C708
QR5587.E020	1.85	0.98	0.08	28500	0.4425	MS17987C720
QR5587.E022	1.85	0.98	0.08	28500	0.4425	MS17987C722
QR5587.E024	1.85	0.98	0.08	28500	0.4425	MS17987C724
QR5587.E026	1.85	0.98	0.08	28500	0.4425	MS17987C726
QR5587.F011	1.85	1.14	0.08	36900	0.5050	MS17987C811
QR5587.F012	1.85	1.14	0.08	36900	0.5050	MS17987C812
QR5587.F013	1.85	1.14	0.08	36900	0.5050	MS17987C813
QR5587.F014	1.85	1.14	0.08	36900	0.5050	MS17987C814
QR5587.F015	1.85	1.14	0.08	36900	0.5050	MS17987C815
QR5587.F033	1.85	1.14	0.08	36900	0.5050	MS17987C833
QR5587.F039	1.85	1.14	0.08	33900	0.5050	MS17987C839
QR5587.F050	1.85	1.14	0.08	36900	0.5050	MS17987C850
QR5587.F053	1.85	1.14	0.08	36900	0.5050	MS17987C853
QR5587.F065	1.85	1.14	0.08	36900	0.5050	MS17987C865
QR5587.F080	1.85	1.14	0.08	36900	0.5050	MS17987C880
QR5587.G013	2.03	1.14	0.08	46700	0.5675	MS17987C913
QR5587.G030	2.03	1.14	0.08	46700	0.5675	MS17987C930
QR5587.G037	2.03	1.14	0.08	46700	0.5675	MS17987C937

QUICK RELEASE PINS



## Wixroyd Flight Pin Range - Certified to Aviation Standards

With many years experience producing an extensive range of standard Pip-pins (also know as quick release pins or ball lock pins) we are now able to offer of Aviation Standard approved Pip-pins, manufactured according to NASM norms (formerly MS norms) and tested to NAS 1332 standards.

### Expanding Range



**33600 - Single acting Pip-pin, standard B handle**

**33610 - Single acting Pip-pin, standard TA handle**

**33620 - Single acting Pip-pin, standard LA handle**

**33630 - Single acting Pip-pin, standard R handle**

### Wide Range of Aviation Applications

- Interior panel attachment
- Baby bassinet pin
- Curtain track attachment
- Curtain track support pins
- TV monitor attachment
- Folding table assembly (e.g. First Class Cabins)

### Aviation Approved

The Wixroyd Aviation Pip-pin range is produced according to NASM norms, and tested to NAS standards. Our manufacturing processes have been assessed and certified by EASE (European Aerospace Supplier Evaluation) to EN9100D.

All our Aviation Pip-pins are individually marked to enable identification of their production lot number.

### In-Stock and Available?

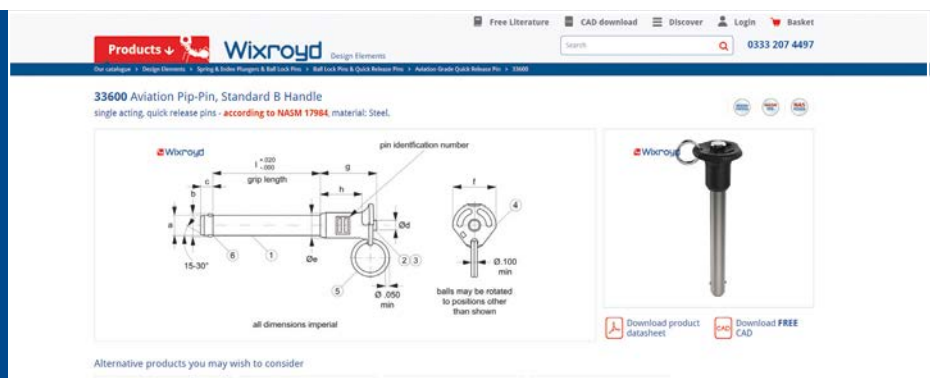
Yes! The product sizes shown on the following pages, with a cross reference to the NASM part code for ease of identification, are all available from stock for delivery within 5 days.

### Special Designs

We have extensive knowledge and experience in designing, producing and assembling bespoke design pip-pins and ball lock pins in both imperial and metric sizes. We produce under a fully certified manufacturing process, both to our own high standard or to meet Aviation standards.

Please contact our technical team to discuss your requirements (tel. 0845 26 66 577) or email a drawing to [info@wixroyd.com](mailto:info@wixroyd.com)

For our full range visit:  
**wixroyd.com**





### Wixroyd Flight Pin Range - Certified to Aviation Standards

Your normal experience may be that imperial Aviation Standard Pip-pins are hard to obtain; price prohibitive, and delivery times far too long. The range of Wixroyd Aviation Pip-pins, in a variety of imperial dimensions, has been designed to solve these problems - we hold a wide, and ever increasing range of sizes ex-stock for immediate delivery - no more 6-8 week lead time!

With many years experience producing an extensive range of standard Pip-pins (also know as quick release pins or ball lock pins) we are now able to offer of Aviation Standard approved Pip-pins, manufactured according to NASM norms (formerly MS norms) and tested to NAS 1332 standards.

- Interior panel attachment
- Baby bassinet pin
- Curtain track attachment
- Curtain track support pins
- TV monitor attachment
- Folding table assembly (e.g. First Class Cabins)

#### Wide Range of Aviation Applications

Yes! The product sizes shown on the following pages, with a cross reference to the NASM part code for ease of identification, are all available from stock for delivery within 5 days.

#### In-stock and Available?

Our Aviation Pip-pins are manufactured to NASM norms, and we follow the material specification of these norms, which means you can feel safe in purchasing a part which is to specification - both in materials and strength.

#### Materials



The new Wixroyd Aviation Pip-pin range is produced according to NASM norms, and tested to NAS standards. Our manufacturing processes have been assessed and certified by EASE (European Aerospace Supplier Evaluation) to EN9100D.

#### Aviation Approved

All our Aviation Pip-pins are individually marked to enable identification of their production lot number. Marking allows identification of:

- NASM Standard Number
- Material Grade
- Pin/shank diameter
- Grip length
- Company identification
- Production lot number.

#### Identifying Production Batches

We have extensive knowledge and experience in designing, producing and assembling bespoke design pip-pins and ball lock pins in both imperial and metric sizes. We produce under a fully certified manufacturing process, both to our own high standard or to meet Aviation standards.

We can customise to meet your needs:

- Changes in grip/handle type
- Material variations
- Changes of functional dimensions; pin diameter, pin grip length

Please contact our technical team to discuss your requirements (tel. 0845 26 66 577) or email a drawing to [info@wixroyd.com](mailto:info@wixroyd.com)

#### Special Designs



Single acting Pip-pin, standard B handle



Single acting Pip-pin, standard TA handle



Single acting Pip-pin, standard LA handle



Single acting Pip-pin, standard R handle

#### Expanding Range